

PRISE DE PARTICIPATION  
DES COLLECTIVITES  
DANS LES PROJETS  
D'ENERGIES RENOUVELABLES

# PORTAGE DE PROJET

Implication locale



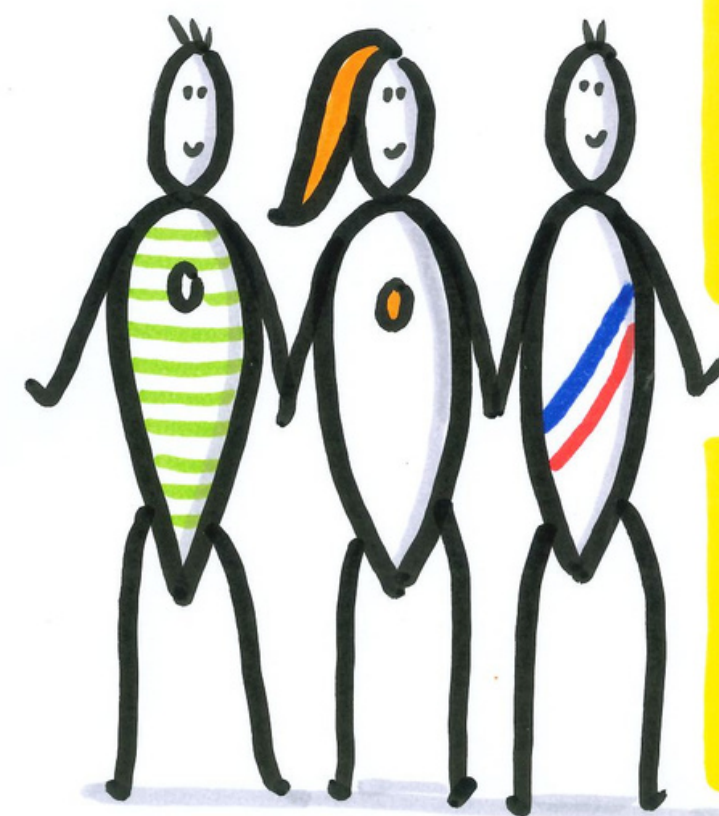
Projet  
100% privé



Co.  
développement



Initiative &  
portage local



# == ENJEUX DE LA PARTICIPATION LOCALE ==

PRISE EN  
COMPTE ENJEUX  
LOCAUX



A stick figure with a yellow dotted body is holding a red triangular warning sign with a black exclamation mark inside.

RETOMBÉES  
ECONOMIQUES SUR  
LE LONG TERME



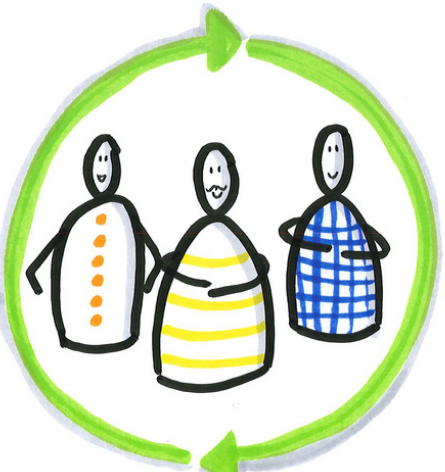
A yellow money bag with a crown on top and a Euro symbol (€) on the front. A curved arrow loops around the bag, indicating a long-term cycle.

CIRCUIT COURT  
DE L'EPARGNE



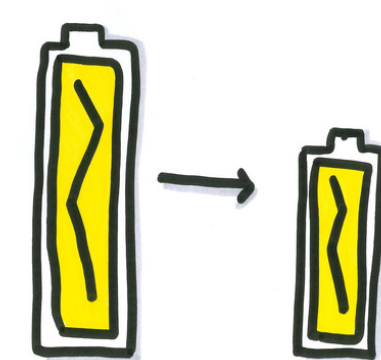
A red Euro symbol (€) inside a teardrop shape. Three arrows point from it to three wind turbines, a solar panel, and a green battery.

DYNAMIQUE  
SOCIALE



Three stick figures in different colored shirts (orange, yellow, blue) are arranged in a circle. A green circular arrow surrounds them, indicating a social dynamic or cycle.

REFLEXION GLOBALE  
ET LEVIERS D'ACTION  
SUR LES  
ECONOMIES D'ENERGIE



Two yellow batteries. The one on the left is larger and has a lightning bolt symbol, while the one on the right is smaller. An arrow points from the larger one to the smaller one.

MEILLEURE  
ACCEPTATION  
DES PROJETS



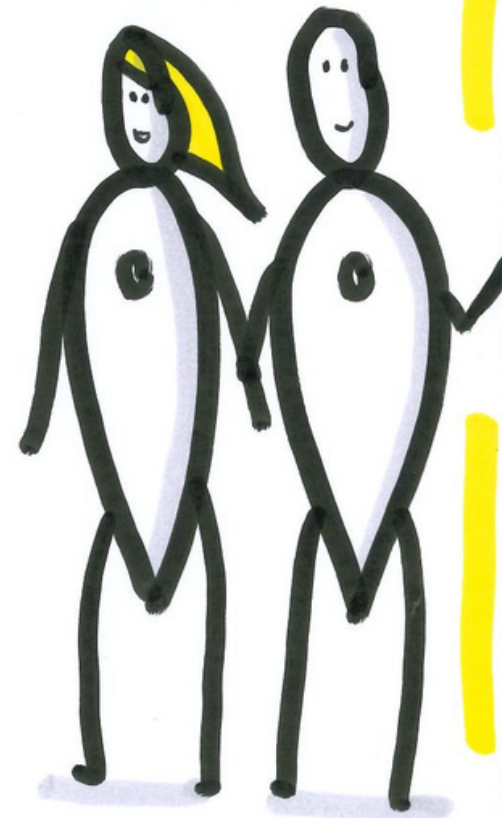
A stick figure holding a yellow sign that says "OUI!" (Yes!).

# ACTEURS DES PROJETS ENR

Développeurs  
privés



Acteurs locaux



Partenaires projets  
locaux

INVESTISSEMENT  
DES  
COLLECTIVITES

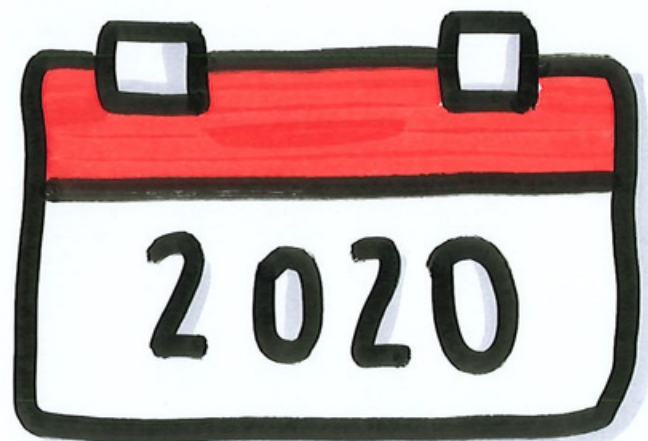
# CADRE JURIDIQUE



- Loi pour la transition énergétique et la croissance verte



- Loi PACTE



- Loi énergie - climat

# MODALITES D'INVESTISSEMENT

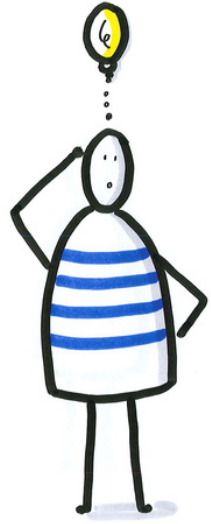


**EN DIRECT**

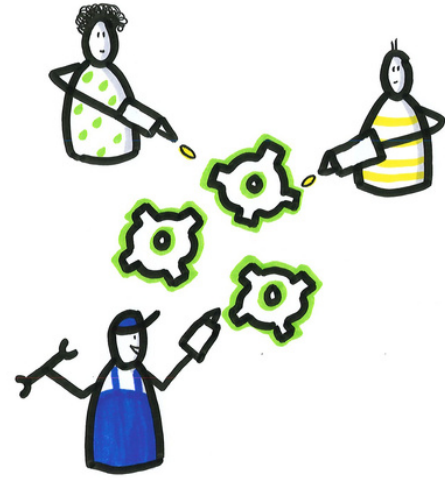


**VIA STRUCTURE  
LOCALE D'INVESTISSEMENT**

# ETAPES D'UN PROJET



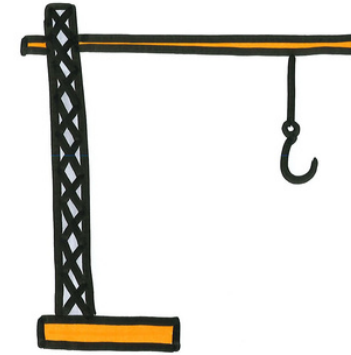
EMERGENCE  
IDÉE



DEVELOPPEMENT



POST-DEVELOPPEMENT



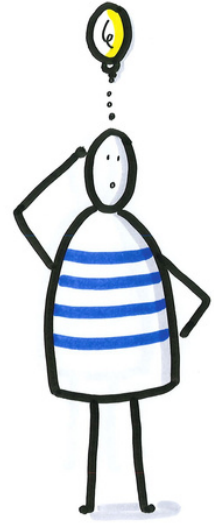
CONSTRUCTION



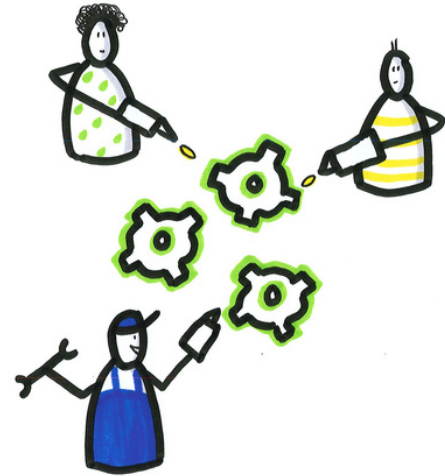
EXPLOITATION



# ETAPES D'UN PROJET



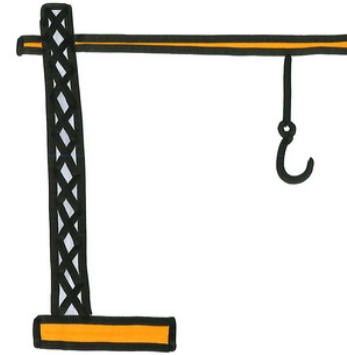
EMERGENCE  
IDÉE



DEVELOPPEMENT



POST-DEVELOPPEMENT



CONSTRUCTION



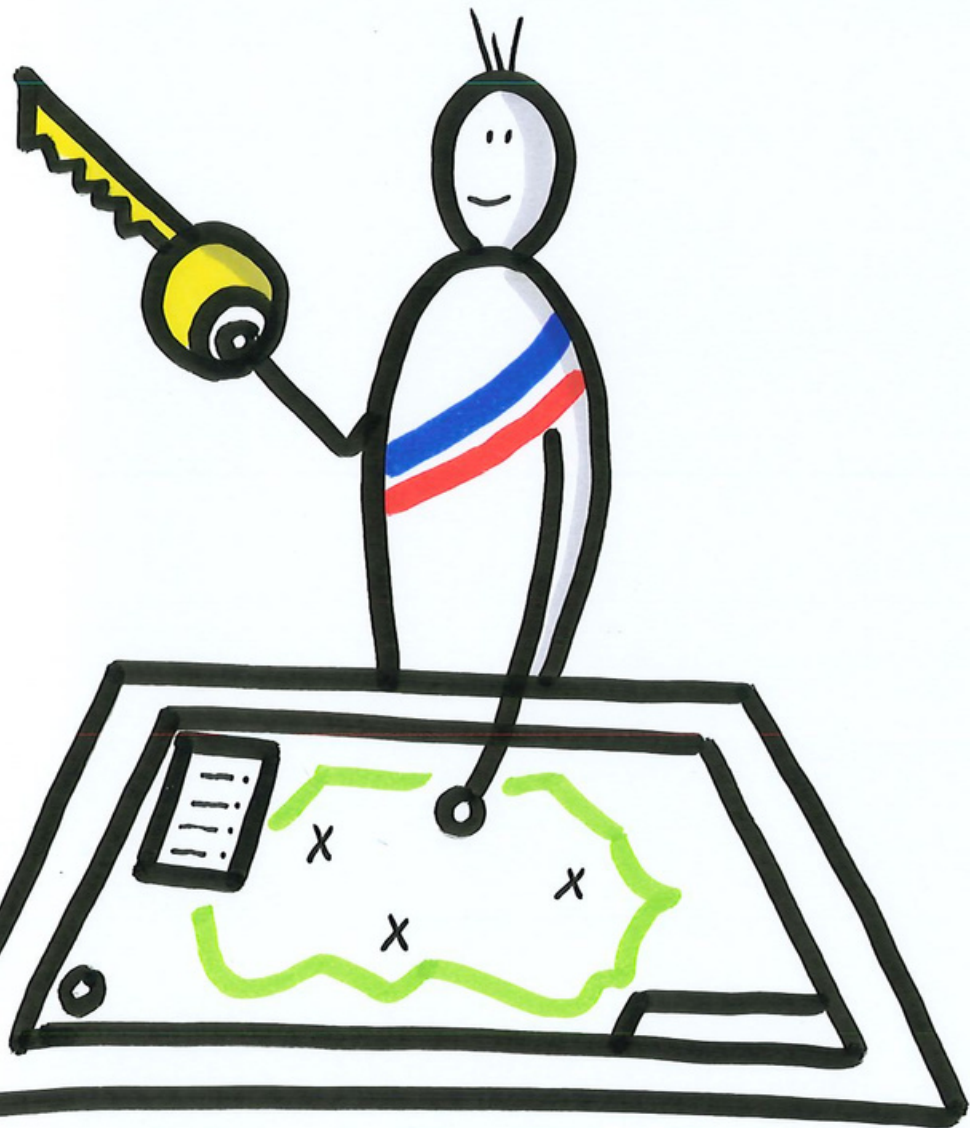
EXPLOITATION

Maîtrise locale

Coût d'entrée  
dans le projet

# ROLE COLLECTIVITES

## Emergence



**MAITRISE  
FONCIERE**



**A.M.I.**



**PORTER LE  
PROJET**

# ROLE COLLECTIVITES

## Développement







**NEGOCIATION**  
**PARTENARIAT**





**PARTICIPATION**  
**ARBITRAGES**

# FINANCEMENT PARTICIPATIF



financement en dette  
"Crowdfunding"

-  Durée limitée
-  Rendement fixe
-  Pas rôle décision
-  Risque limité

-  Long terme
-  Rendement variable
-  Rôle actif possible
-  Plus exposé au risque

financement en capital



# INVESTISSEMENT LOCAL

FOCUS

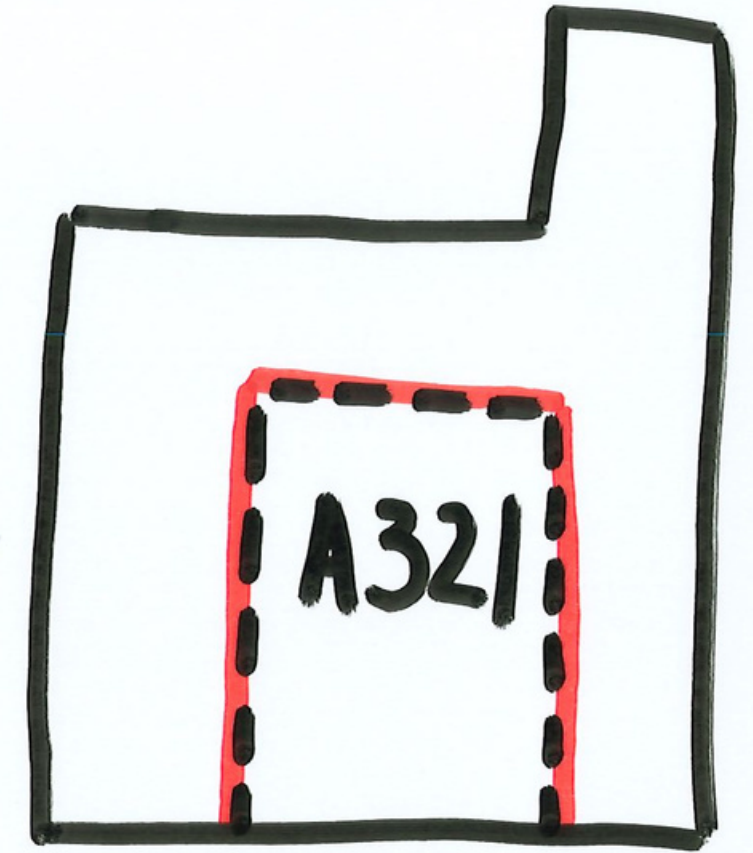
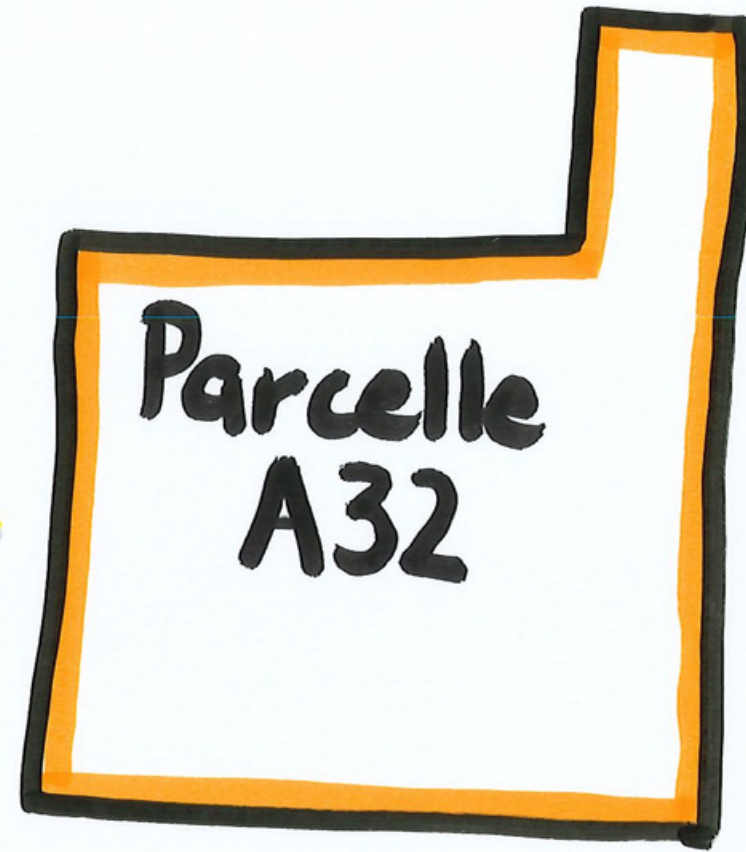
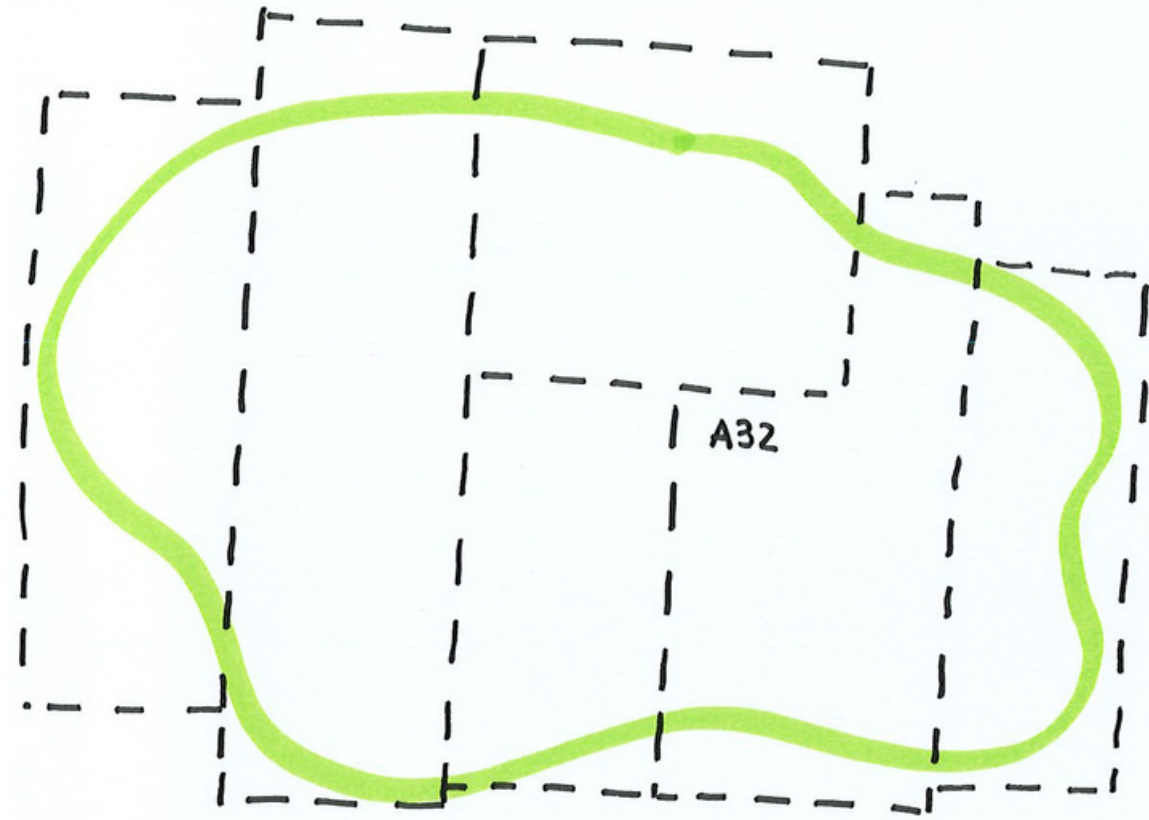
SUR LE

FONCIER

# PRINCIPES

# MAITRISE

# FONCIERE



Signature promesse  
de bail sur toutes les  
parcelles avant  
lancement études

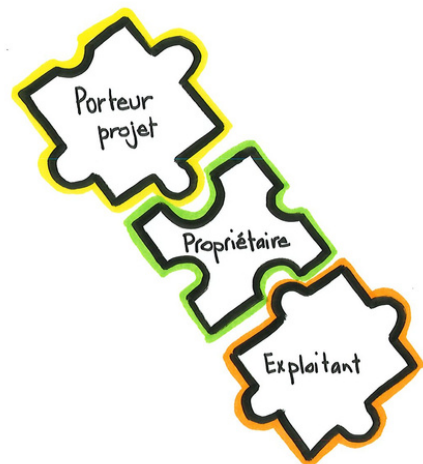
Promesse de bail  
signée pour  
la parcelle  
entière

Bail signé  
sur la nouvelle  
parcelle

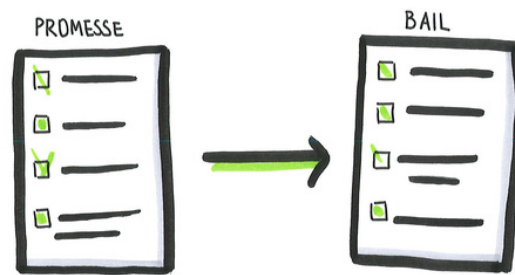
# PRINCIPES

DE LA

# PROMESSE DE BAIL



SIGNATURE  
TRIPARTITE



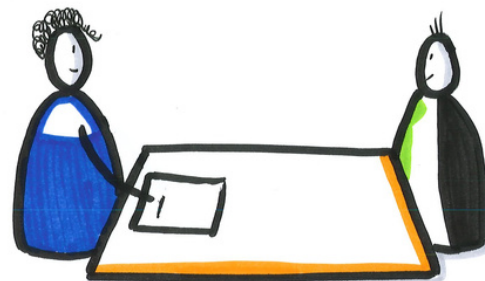
DEFINIT CONDITIONS  
DE LA PROMESSE  
& CELLES DU FUTUR  
BAIL



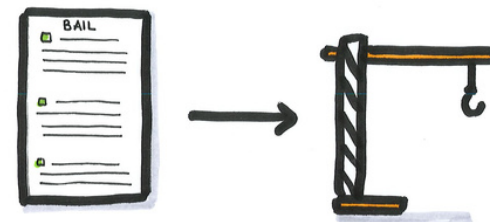
EXCLUSIVITÉ



TRANSFERT  
POSSIBLE VERS  
AUTRE ENTITE



BAIL  
EMPHYTEOTIQUE  
SIGNÉ CHEZ  
NOTAIRE



BAIL CONFERE  
DROIT REEL

# CONTENU

## PROMESSE DE BAIL

Préambule

Présentation des parties

Référence des parcelles

Engagements des parties

Durée de la promesse

Conditions du futur bail

Conditions d'indemnisation

Dispositions générales