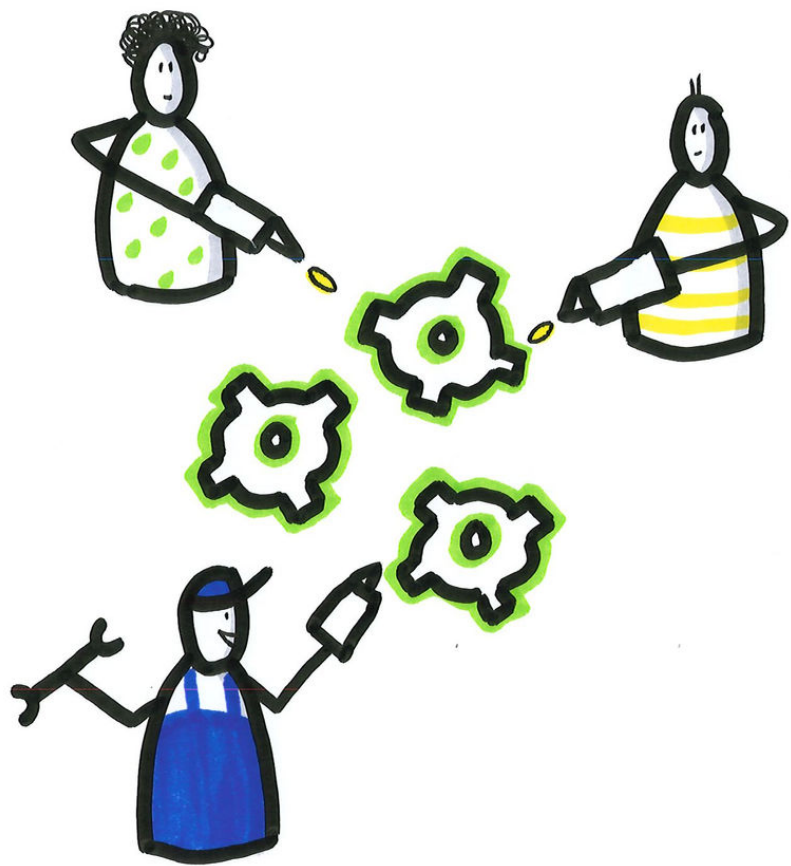


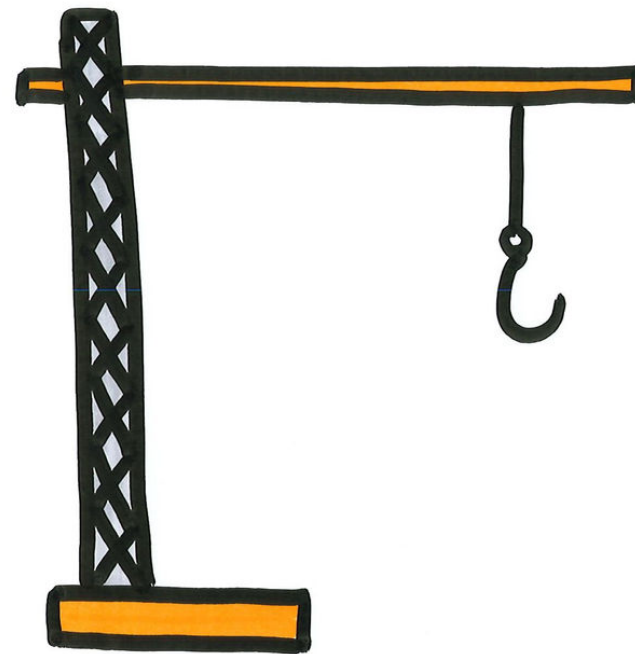
RETOMBÉES
ÉCONOMIQUES
DES PROJETS
D'ÉNERGIES RENOUVELABLES

MODELES
ECONOMIQUES
DES

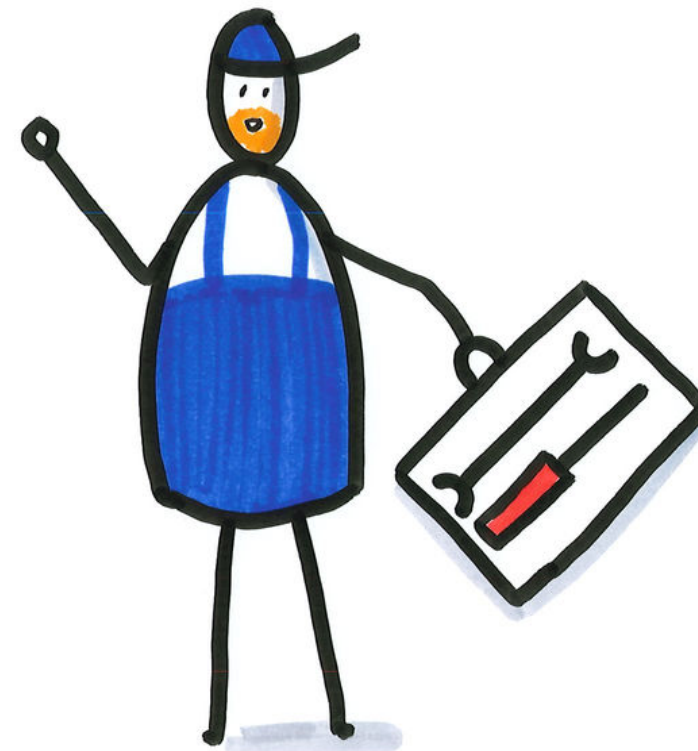
GRANDS PROJETS ENR



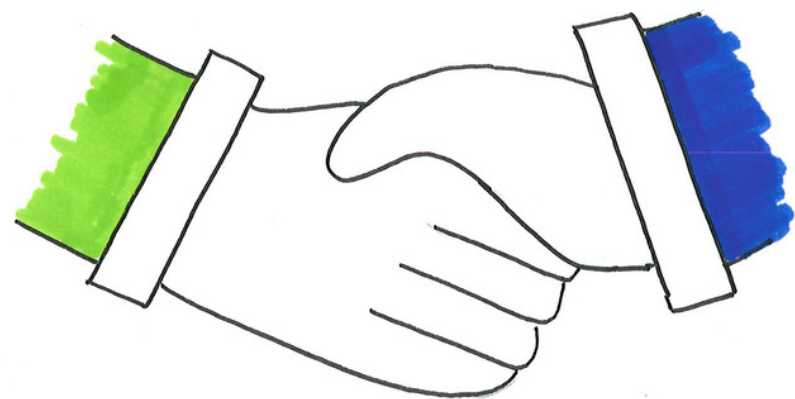
DEVELOPPEMENT



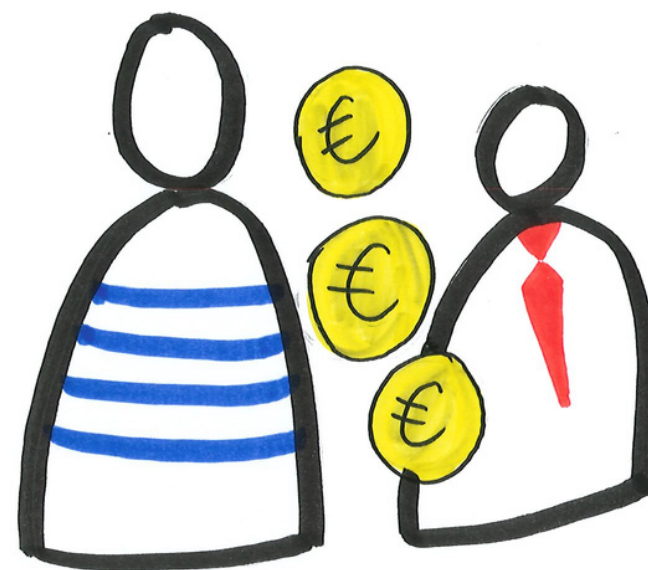
CONSTRUCTION



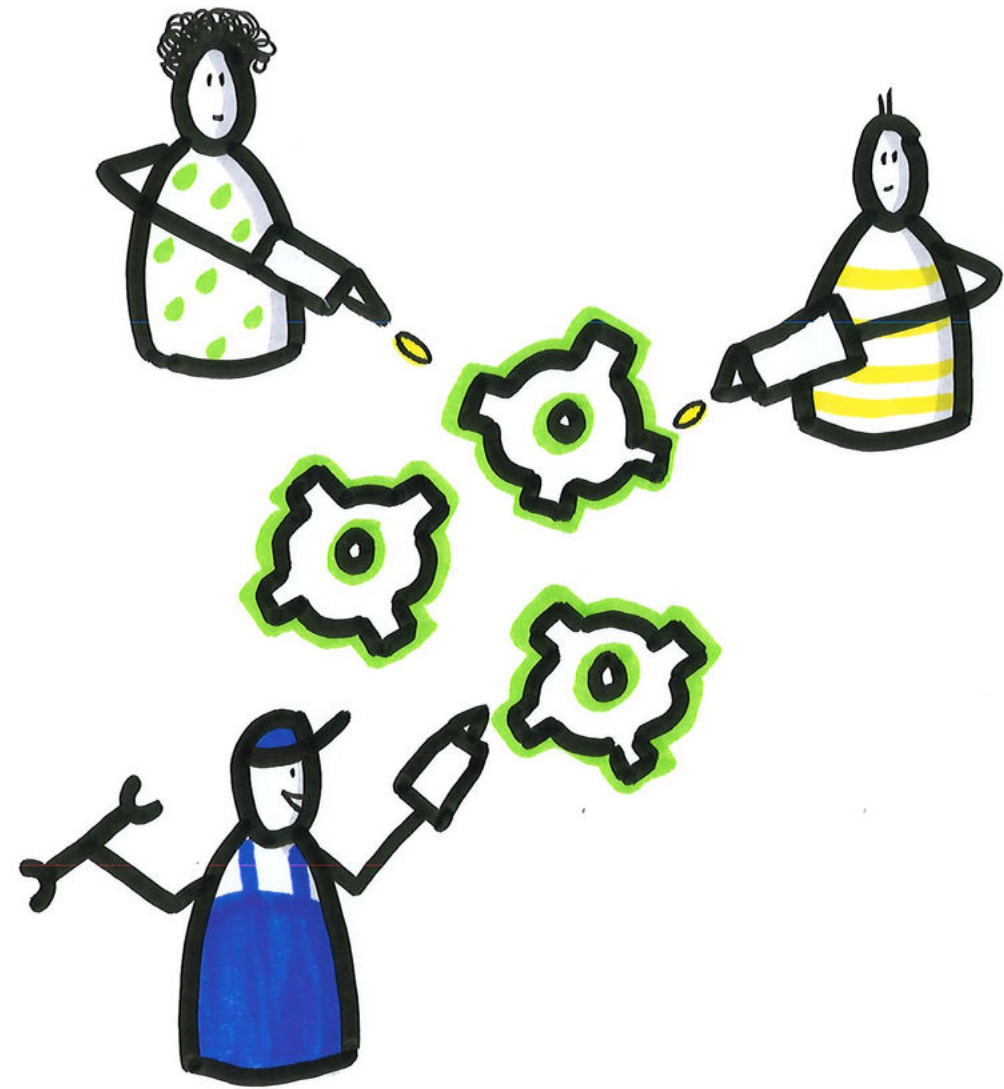
EXPLOITATION



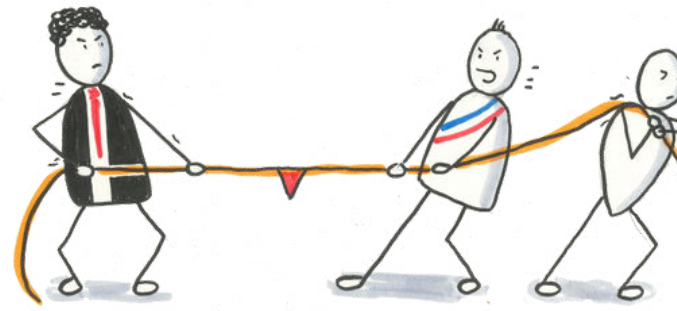
SOUTIEN
PUBLIC



INVESTISSEMENT
ATTRACTIF



DEVELOPPEMENT



PHASE
CONCURRENTIELLE
(accès au foncier)



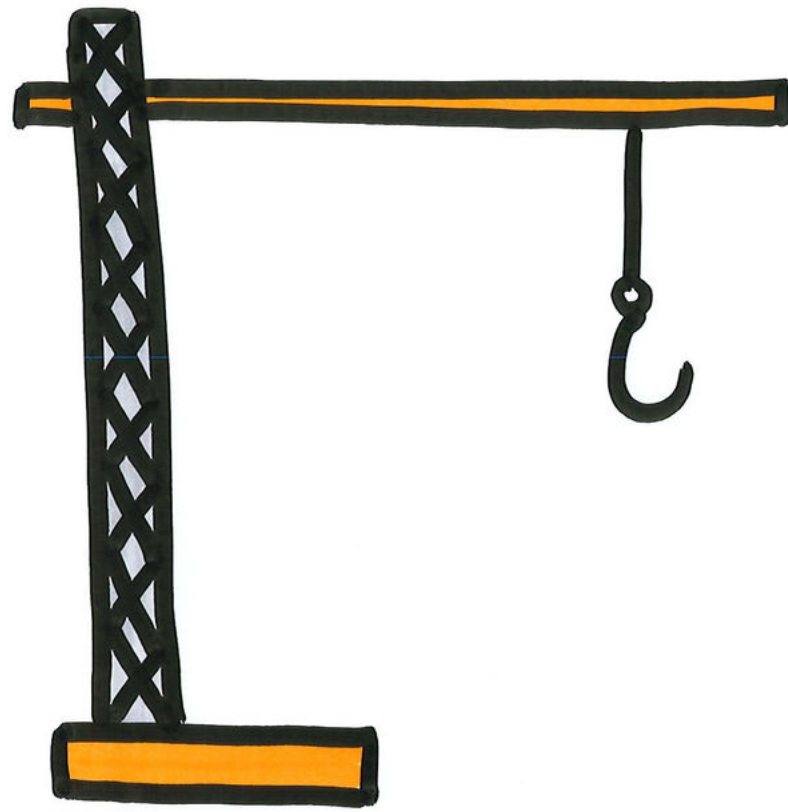
INCERTITUDE
ELEVEE



LUCRATIVITE
ELEVEE



PHASE LONGUE



CONSTRUCTION



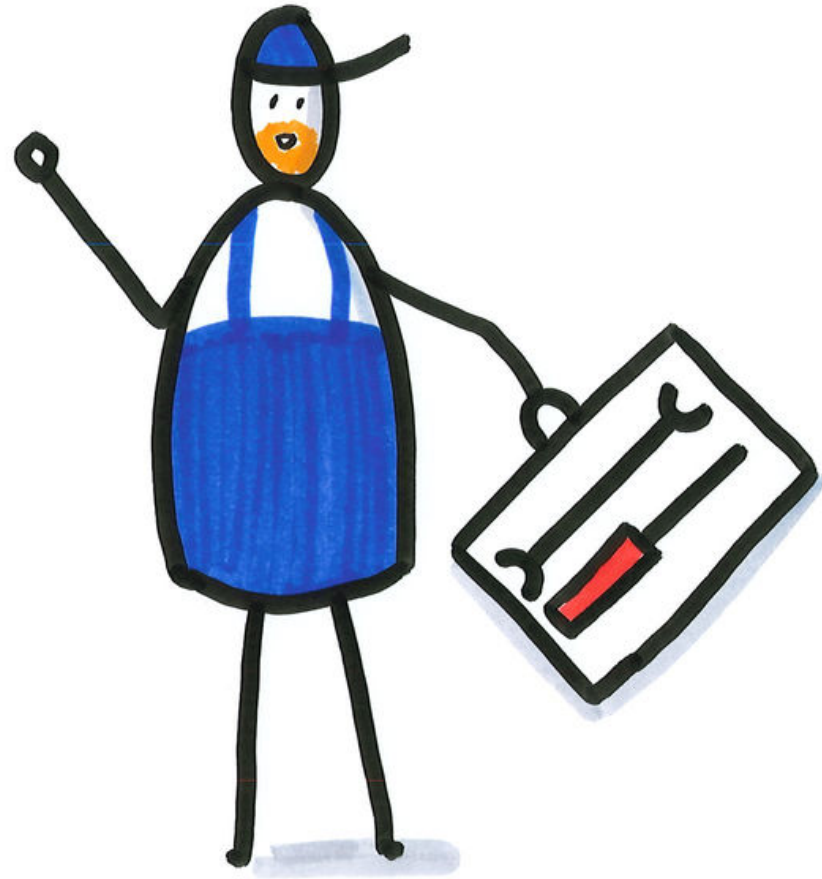
METIERS
TECHNIQUES



CONDITIONS
BANCAIRES



CLE EN MAIN
(marge importante)



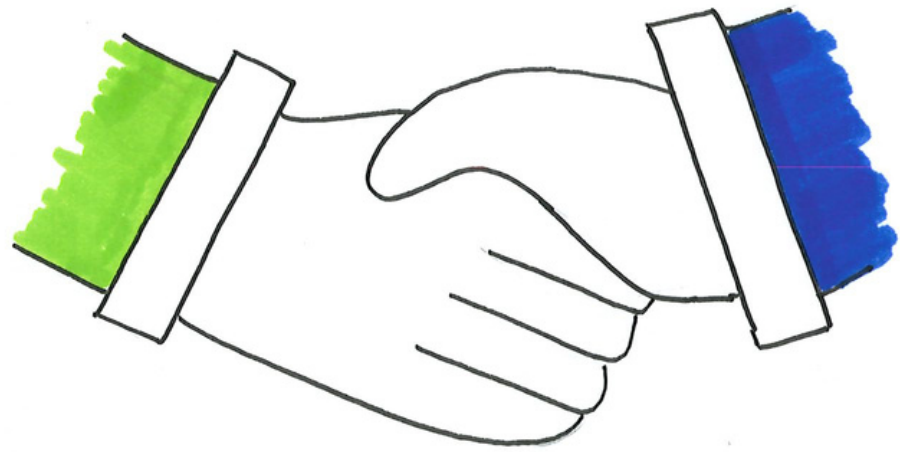
EXPLOITATION



FAIBLES COÛTS
(3% du chiffre d'affaires)



**VISIBILITE
LONG TERME**



**SOUTIEN
PUBLIC**



**BESOIN EN
CAPITAUX**



PRIX GARANTI

par l'Etat



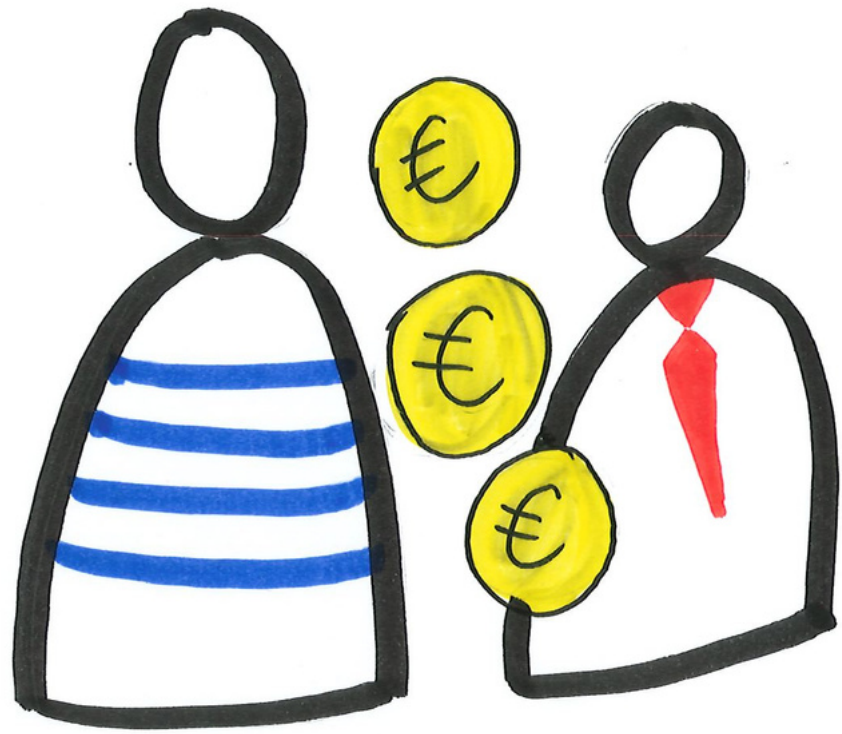
**DUREE LONGUE
D'EXPLOITATION**

(20 ans)



**CHIFFRE
D'AFFAIRE**

long terme



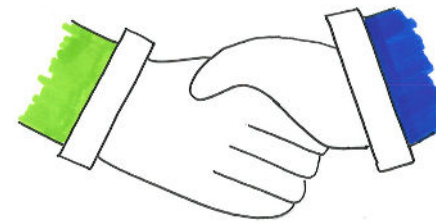
**INVESTISSEMENT
ATTRACTIF**



**REVENUS
LINEAIRES**



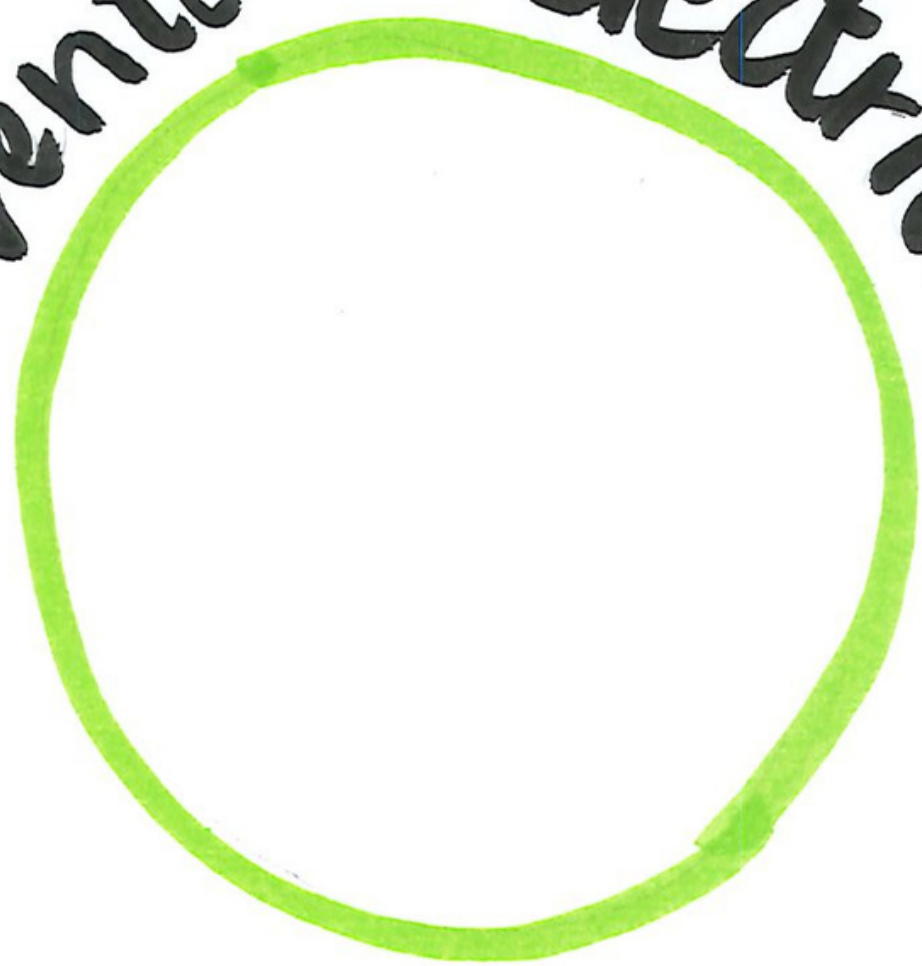
FORTE DEMANDE
d'investissement



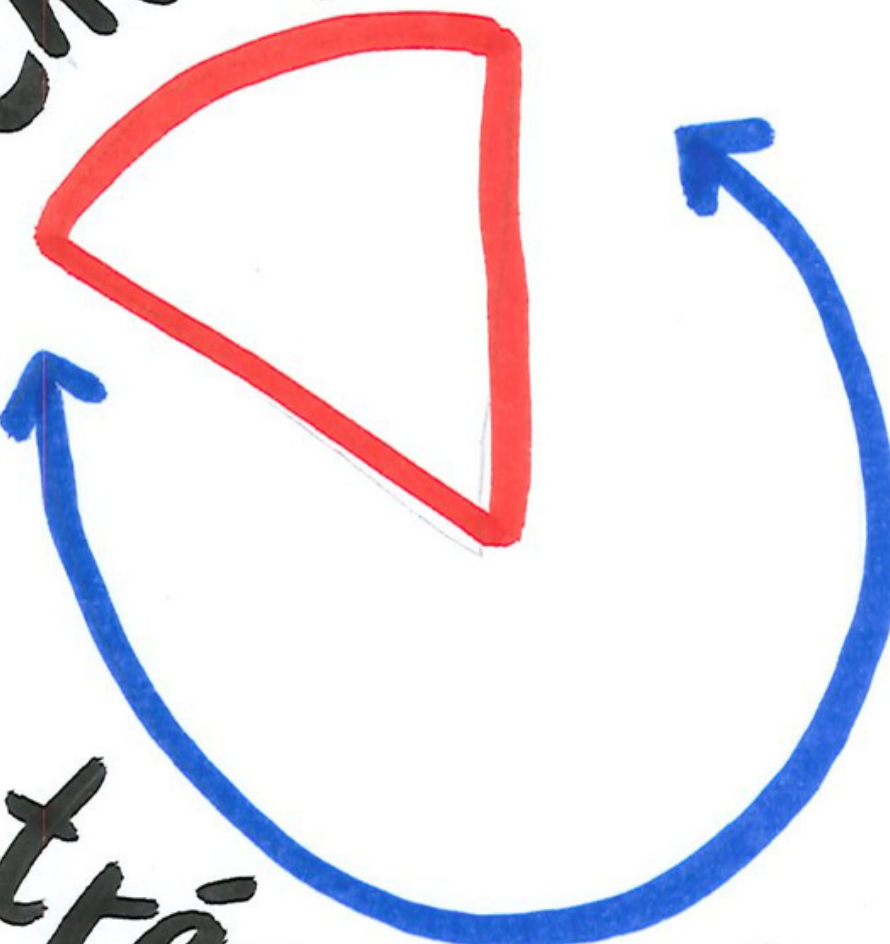
**SOUTIEN
PUBLIC**

RETOMBÉES
ÉCONOMIQUES
DES PROJETS
D'ÉNERGIES RENOUVELABLES

Vente d'électricité

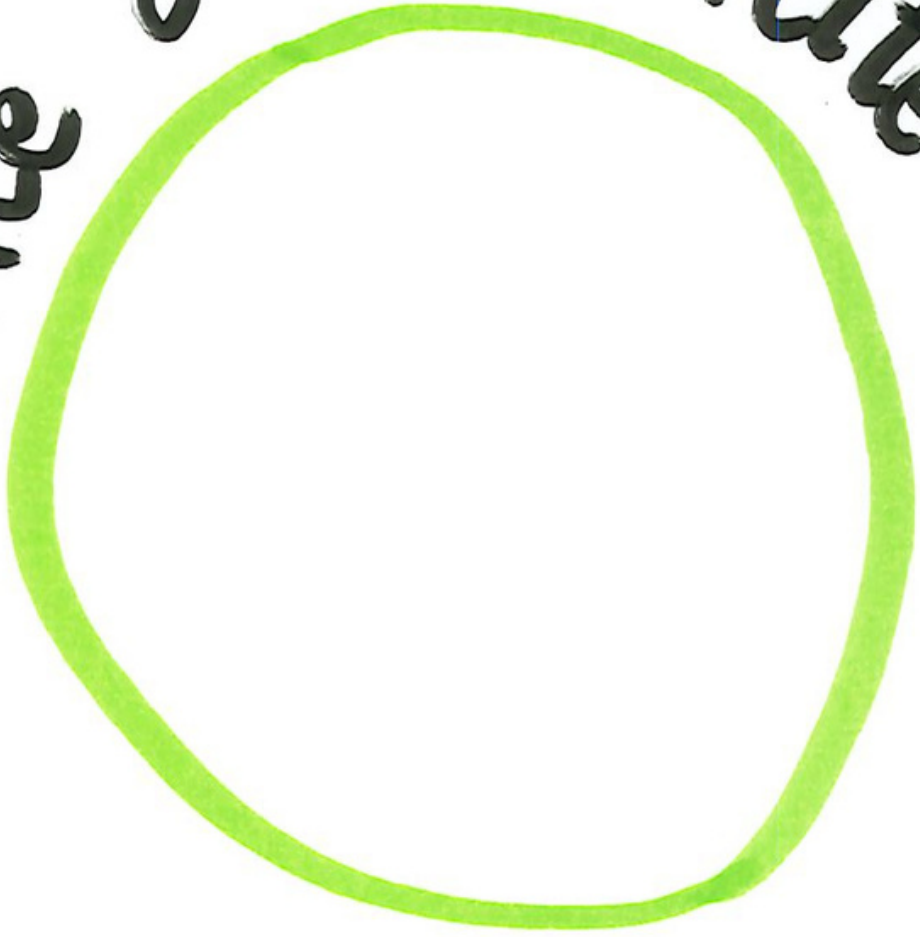


charges

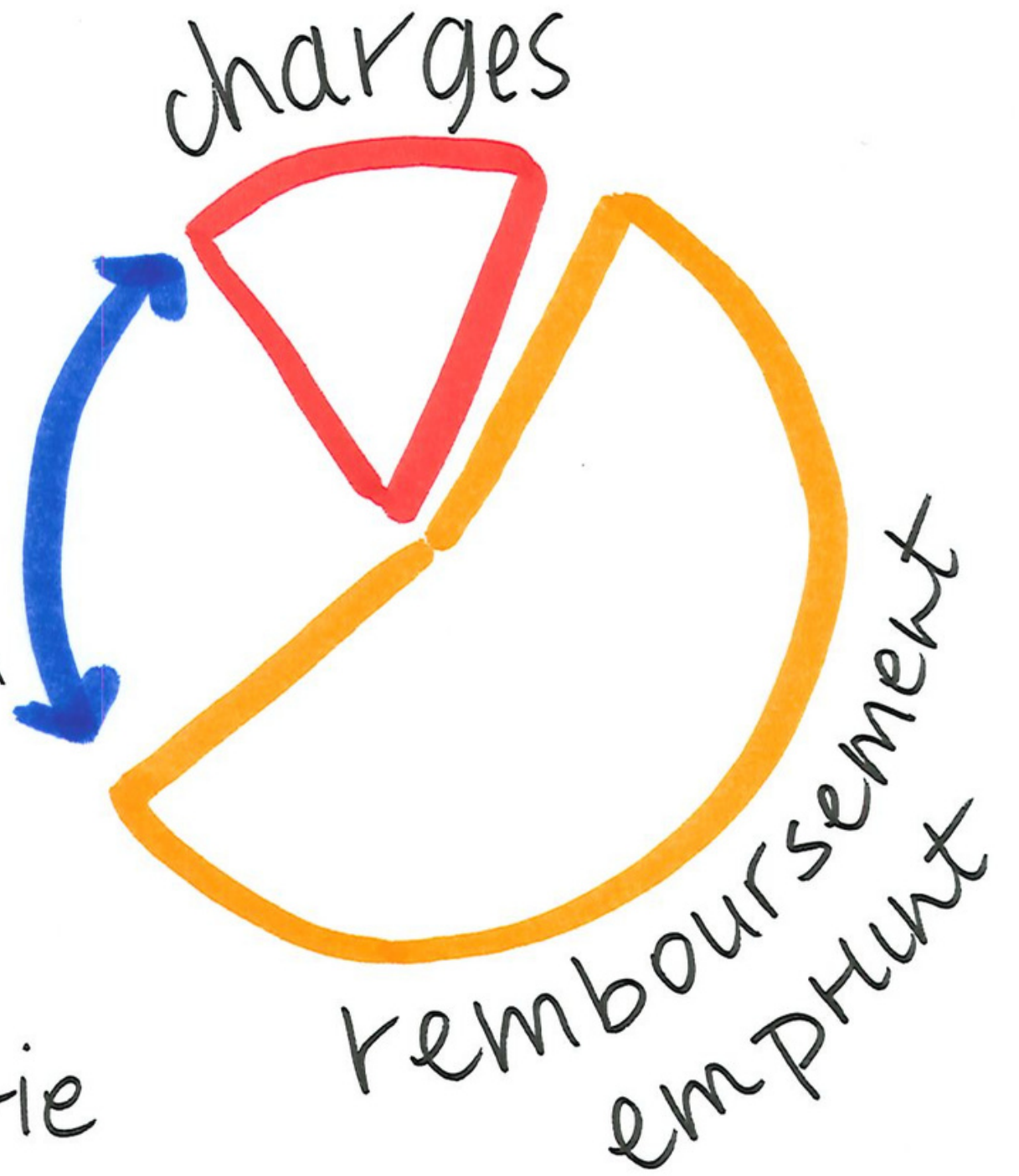


trésorerie
disponible pour
rembourser la dette

Vente d'électricité

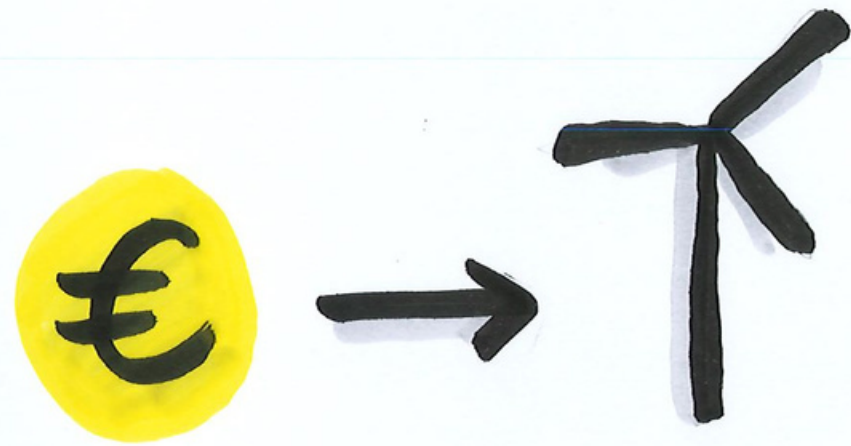


trésorerie
investisseurs



PROJET 5 ↑

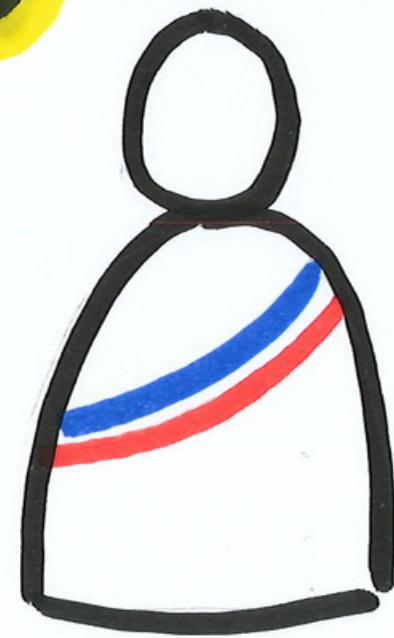
250 000 €



19,5 M€

d'investissement

110 000 €

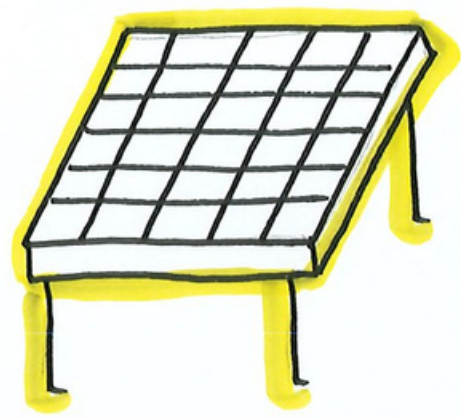


de recettes
fiscales locales



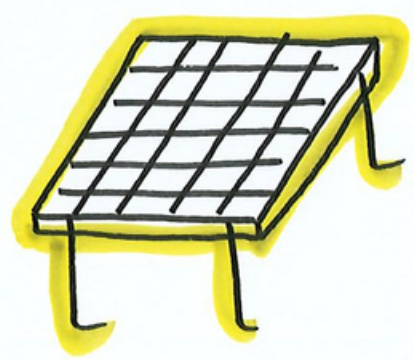
trésorerie
investisseurs

PARC SOLAIRE AU SOL



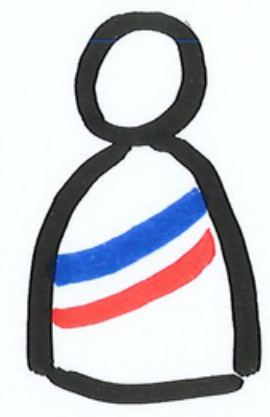
15 MWc
15 ha.

50 000 €



10.5 M €

d'investissement



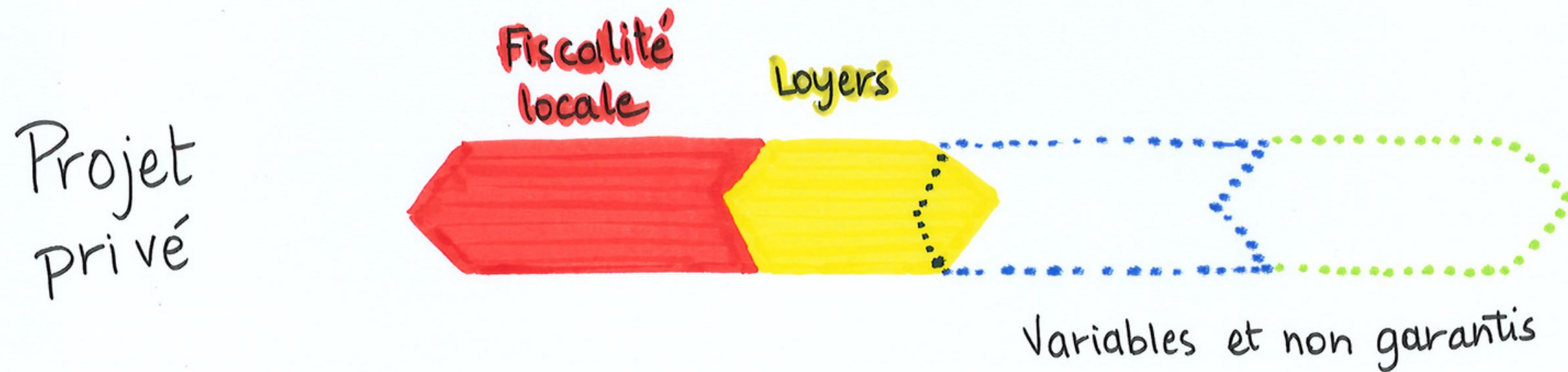
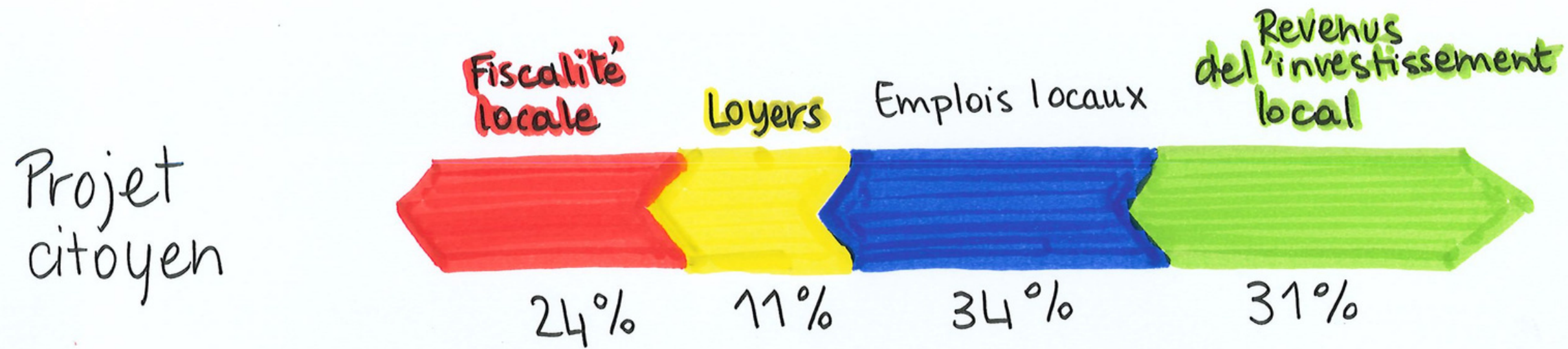
de recettes fiscales locales

120 000 €



trésorerie investisseurs

RETOMBÉES ÉCONOMIQUES



AUTRES RETOMBÉES

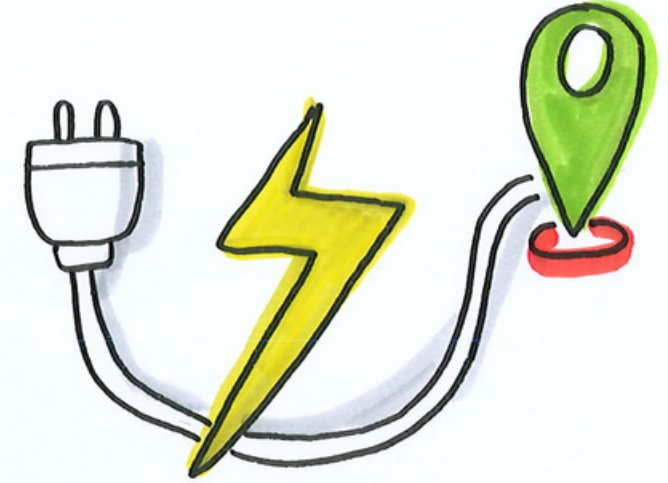


MAITRISE DE
L'ENERGIE



MESURES
POUR LE
TERRITOIRE

OFFRE
LOCALE



MEILLEURE
ACCEPTATION
DES PROJETS

QUELQUES

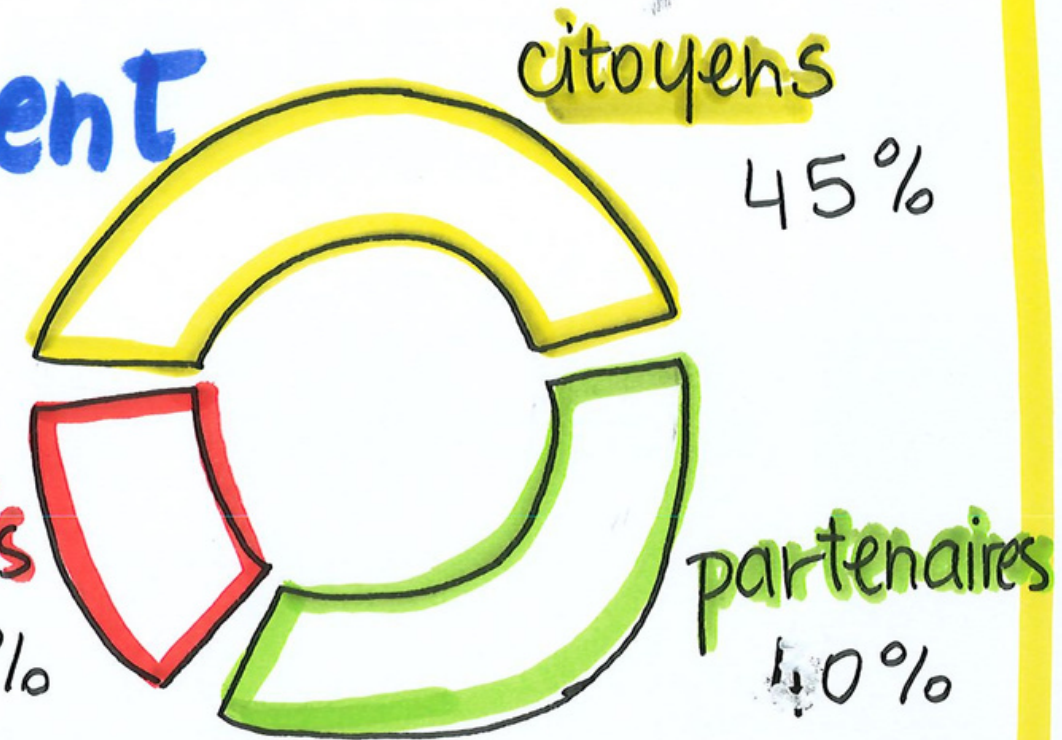
EXEMPLES

SAINT GANTON (35)



projet éolien citoyen

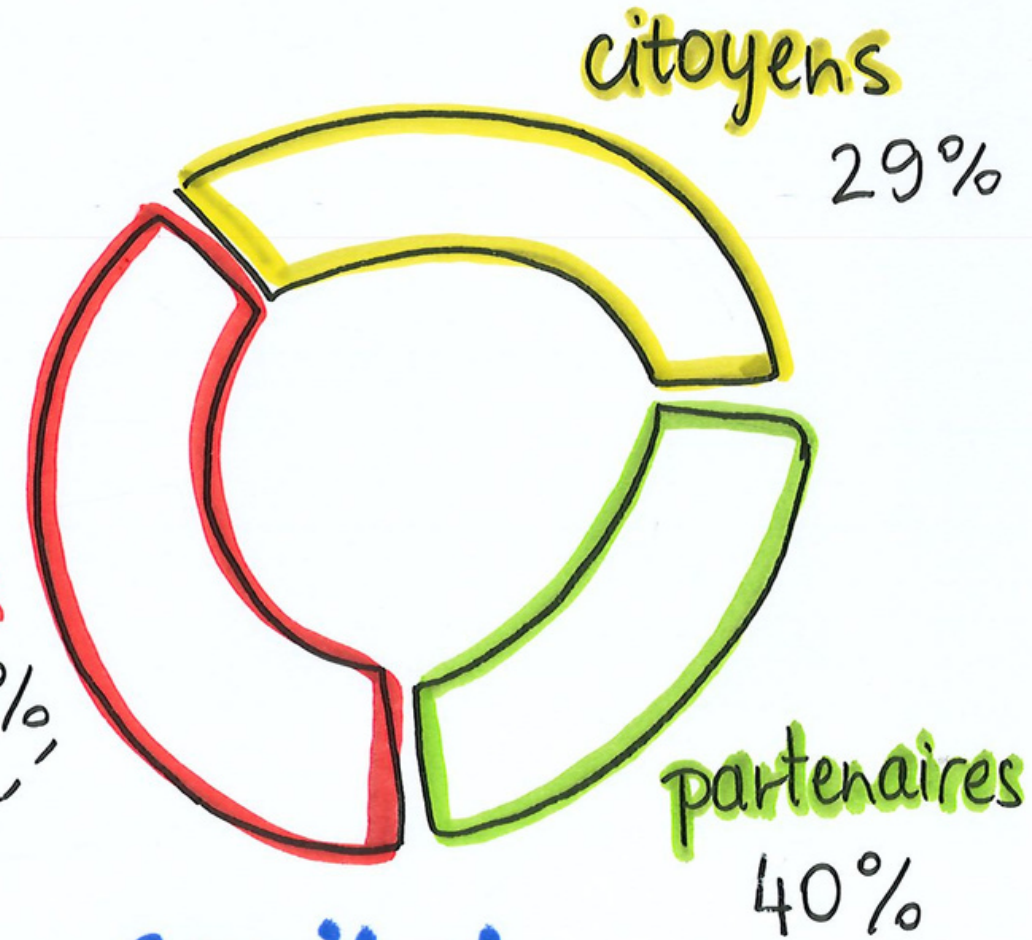
financement



association sté de projet

collectivités

15%



Capital



accords fonciers



collectivités

31%

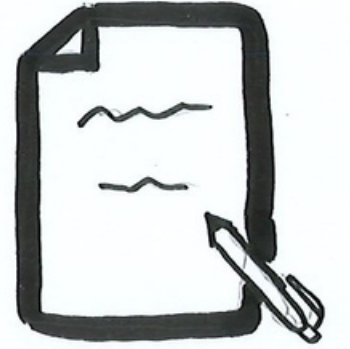
actions de maîtrise de l'énergie prévues



LA CCKB (22)

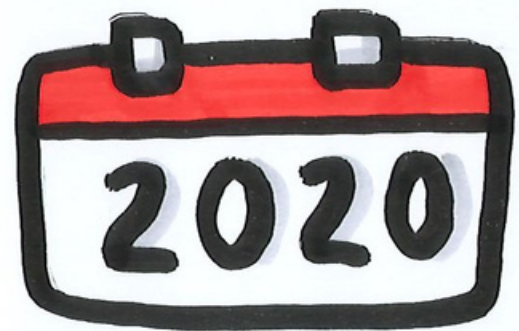


accords de
co-développement



démarchage éolien

300 000 €



+ 276 400 €



10% annulé



30%



25% revendu



100% maîtrise foncière



en discussion

BOUCLES D'INVESTISSEMENT

